



Funding Conversation

June 27, 2017

Goals for today

- Start the conversation
- Understand context
- BRAINSTORM



Continuum of Care (CoC) has two meanings, which is confusing

1. CoC = source of HUD funding
 - Large source of homeless funding

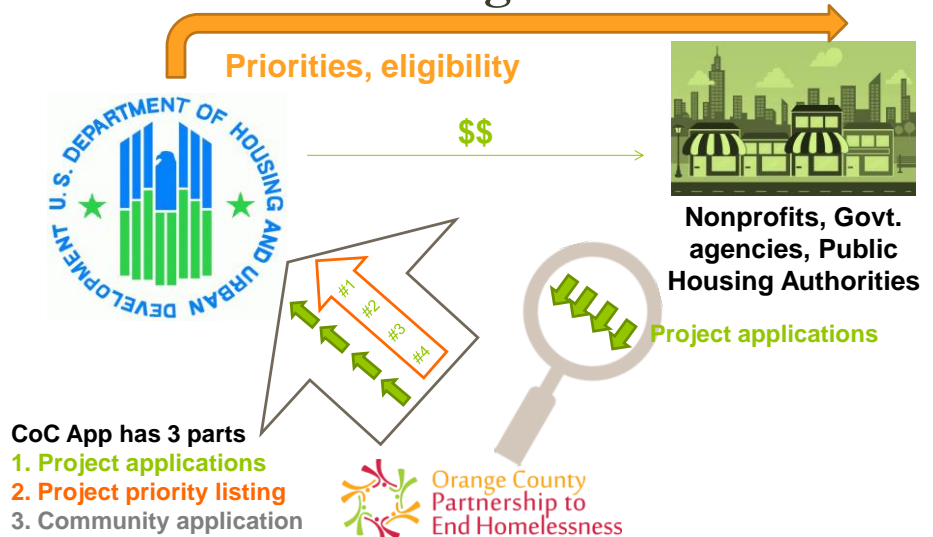


2. CoC = planning area
 - Geographically defined group responsible for homeless services planning & implementation



Orange County
Partnership to
End Homelessness

CoC funds run through CoCs



HUD block grants ESG to larger communities & State of NC



- No ESG entitlements in Orange Co.
- Our ESG process run through State of NC
 - Local process to determine priorities and funding recommendations



Several types of new projects are eligible for funding

Project description	FUNDING SOURCE	
	Reallocation	Permanent Housing Bonus
Permanent Supportive Housing serving 100% chronically homeless	X	X
Permanent Supportive Housing dedicated to chronic homeless	X	
Rapid Re-housing	X	X
Coordinated entry	X	
HMIS	X	



CoC portfolio now 100% Permanent Supportive Housing

Agency	Project	Type	Total
Housing for New Hope	Orange County Housing Support Program	Renewal	\$87,332
Inter-Faith Council for Social Service	IFC Permanent Supportive Housing	New	\$30,415
Cardinal Innovations Healthcare	PSH Concern of Durham 2016	Renewal	\$338,967
Housing for New Hope	UNC XDS Leasing Project 1	Renewal	\$80,879
Cardinal Innovations Healthcare	RA/Operating Renewal 2016 - Tier 1	Renewal	\$101,121

ESG Funding

- Eligible
 - Emergency Response
 - Emergency Shelter
 - Street Outreach
 - Housing Stabilization
 - Targeted Prevention (Diversion)
 - Rapid Re-Housing
 - HMIS
- Available last year: \$59,000
 - Up to \$35,356 in Emergency Response
 - No less than \$23,571 in Housing Stabilization



2 sources of HUD homeless funds, currently projects funded in red

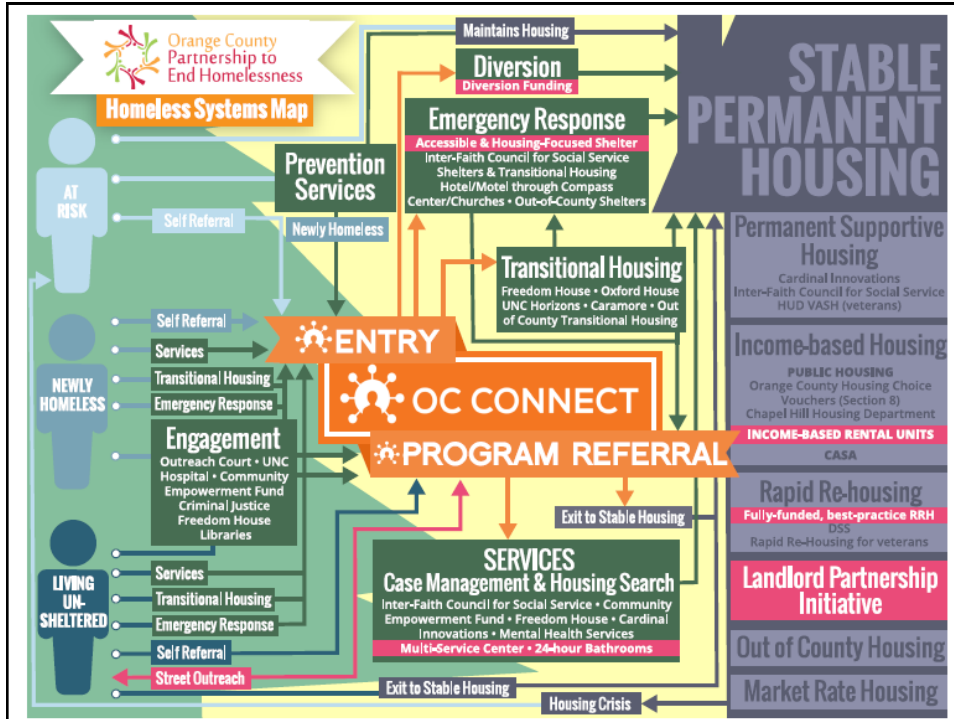
- CoC, \$700,000 total, all PSH; \$100k potentially reallocated
 - Eligible project types
 - Permanent Supportive Housing
 - Rapid Re-housing
 - HMIS
 - Coordinated Entry
 - CoC planning
- ESG, \$60k total, \$35k for shelter ops, \$23,500 for RRH
 - Eligible project types
 - Shelter
 - Rapid Re-housing
 - Prevention (diversion)
 - HMIS



Homeless System Gaps Analysis

1. Best practice, fully funded Rapid Re-housing
2. Income based rental housing
3. Landlord Partnership Initiative
 1. Housing Locator
 2. Risk Mitigation Fund
4. Street outreach program
5. Accessible, housing-focused shelter
6. Drop-in day center with integrated services
7. Diversion funding
8. 24-hour bathrooms in downtown Chapel Hill





Let me know if you'd like to talk further...

- Corey Root
- croot@orangecountync.gov
- 919.245.2496